

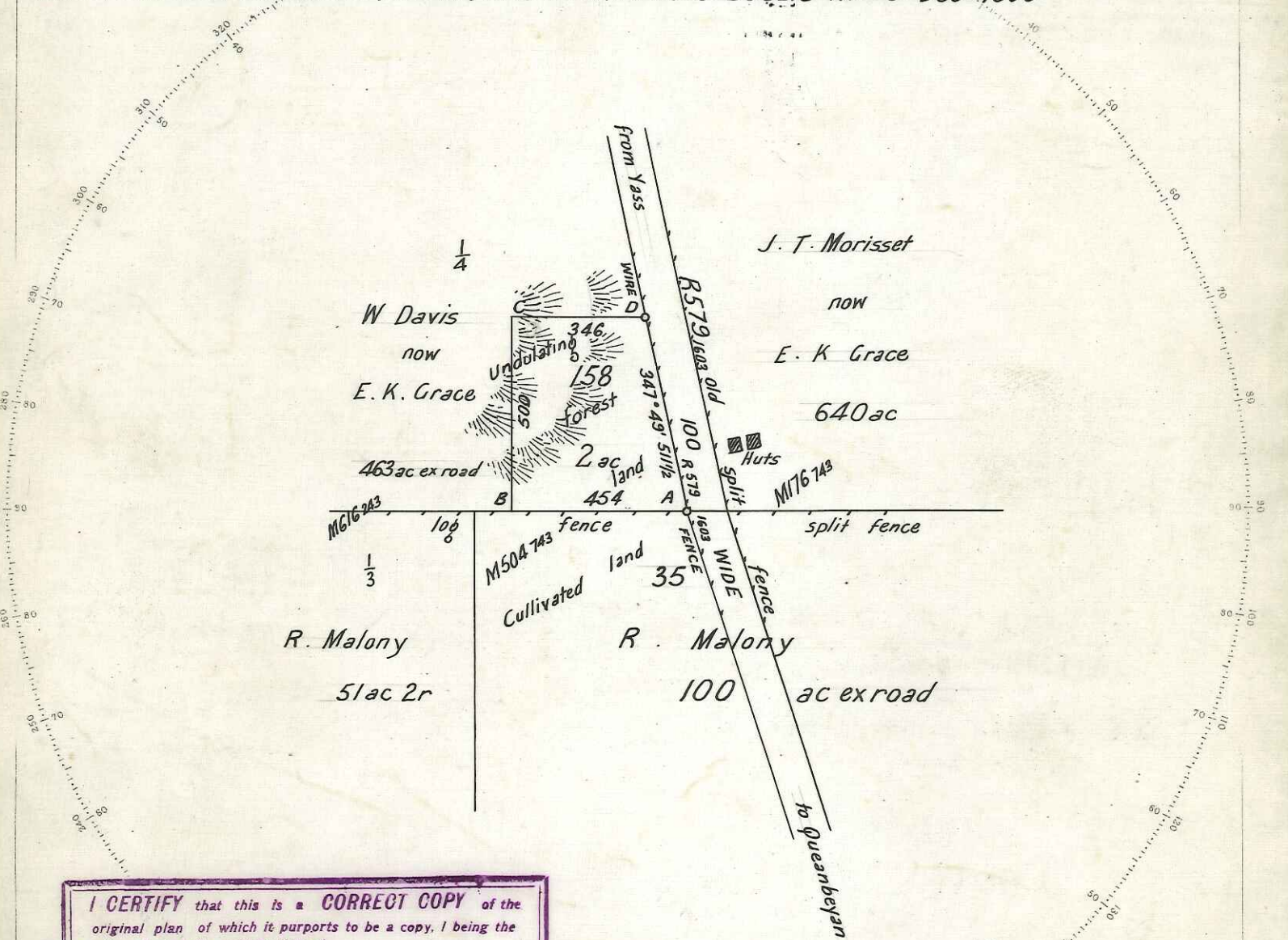


PLAN
of *Portion No 158*
Parish of Canberra
County of Murray

Applied for under the ~~Law of the Crown Lands Alienation Act 1871~~

*To be resumed by the Department of Public Instruction
as a Public School Site at "Stone Hut"
Resumed Vide Gazette 23rd Jan 1885*

Within R. 1052 from Oce for Res or Bus Pur. under M.R. or Bus Lic Notd 9th Dec 1908



I CERTIFY that this is a **CORRECT COPY** of the original plan of which it purports to be a copy, I being the officer having the custody thereof.
Ernest Martin Draftsman-in-Charge
 Compling Division-Lands Dept.
 21. 5. 11

*Value of Improvements £3 Wire Fencing
Azimuth taken from R. 579 1603
Starting point A*

Approved J.H. Lewis 21st Oct 84

*Examined & Charted on Ph Map
W.J. Banks 20.10.84
Calc Book 627 Fol 149*

Reference to Corners

Corner	Bearing	From	Links	N ^o on Tree
A		Post of Fence		↑ R
B		Stake		↑
C		Stake		↑
D		Stake		↑

158

Reference to Traverse

Line	Bearing	Distance

You 84-160 Special 1 Day Field Work 14 Office Passed 21st Oct 84 by Chief Draftsman JHL

Scale 4 Chains to an Inch.

I hereby certify that I in person made and on the 3rd Sept 1884 completed the survey represented on this plan on which are written the bearings and lengths of the lines measured by me and I declare that the survey has been executed in accordance with the regulations published for the guidance of licensed Surveyors and the practice of the Surveyor Generals Department